

Frank J. Gliha
Geauga County Auditor



Courthouse Annex, 231 Main Street, Suite 1A, Chardon, OH 44024-1293
(440) 285-2222, 834-1856, 564-7131 Ext. 1600 or Direct Line (440) 279-1600
FAX: Fiscal Office (440) 279-2184 * Real Estate/Appraisal (440) 286-4359

Web site: <http://www.auditor.co.geauga.oh.us>
Email: auditor@co.geauga.oh.us

Proudly serving the residents of Geauga County



Frank J. Gliha
Geauga County Auditor



**2011 First Quarter Report
“Economic State of Geauga”**



Auditor
Frank J. Gliha
 Chief Fiscal Officer

MEMO

TO: Citizens of Geauga County
 Elected Officials
 Department Heads

FROM: Frank J. Gliha, Auditor

RE: 2011 First Quarter Report "Economic State of Geauga"

DATE: April 19, 2011

I am pleased to present you with our 2011 First Quarter Report. The purpose of this report is to provide accurate and timely financial information for our elected officials, department heads, employees and residents so they may make informed decisions regarding the operations of county government.

First Quarter General Fund Revenues are up 3.71% or \$306,580 compared to last year at this time. The following revenue categories are up compared to last year at this time; *Property Taxes* up 2.02% or \$74,104, *Sales Taxes* up 3.10% or \$84,900, *Charges for Services* up 17.20% or \$141,685, *Fines and Forfeitures* up 71.50% or \$20,047, *Intergovernmental* up 8.90% or \$25,824 and *Other Revenue* up 7.51% or \$19,495. All other revenue categories are down as compared to last year's first quarter; *Licenses and Permits* down 20.75% or \$355, *Interest Income* down 12.76% or \$53,672 and *Transfers* down 25.09% or \$5,448. Real Estate transfers were up from this time last year by 13.92% or 93 parcels and the conveyance tax was up 23.83% or \$36,190.

First Quarter General Fund Expenditures were up 4.49% or \$271,272 as compared to 2010 first quarter. This increase is largely due to the timing of payments on contract renewals.

In Summary: Revenues through the first quarter outpaced expenses by 26.41% or \$2,264,033. This is a result of the continued success in the collection of both current and delinquent taxes. March saw the unemployment rates of 7.6% and 9.0% for Geauga County and Ohio, respectively. While the 6th lowest in the State, unemployment continues to be a concern for Geauga County leadership. Motor vehicle fuel prices and food prices continue to rise. The average fuel price for the first quarter was reaching \$4.00 a gallon, while food prices rose at almost the same ratio. Housing inventories continue to be high. On the bright side, housing starts are trending slightly upwards and consumer spending remains encouraging. The County's wage freeze remains in effect and continues to add value as a measure of controlling expenses for the second straight year. All of the County's leadership will need to continue to add value by focusing on expenditures in the upcoming year.

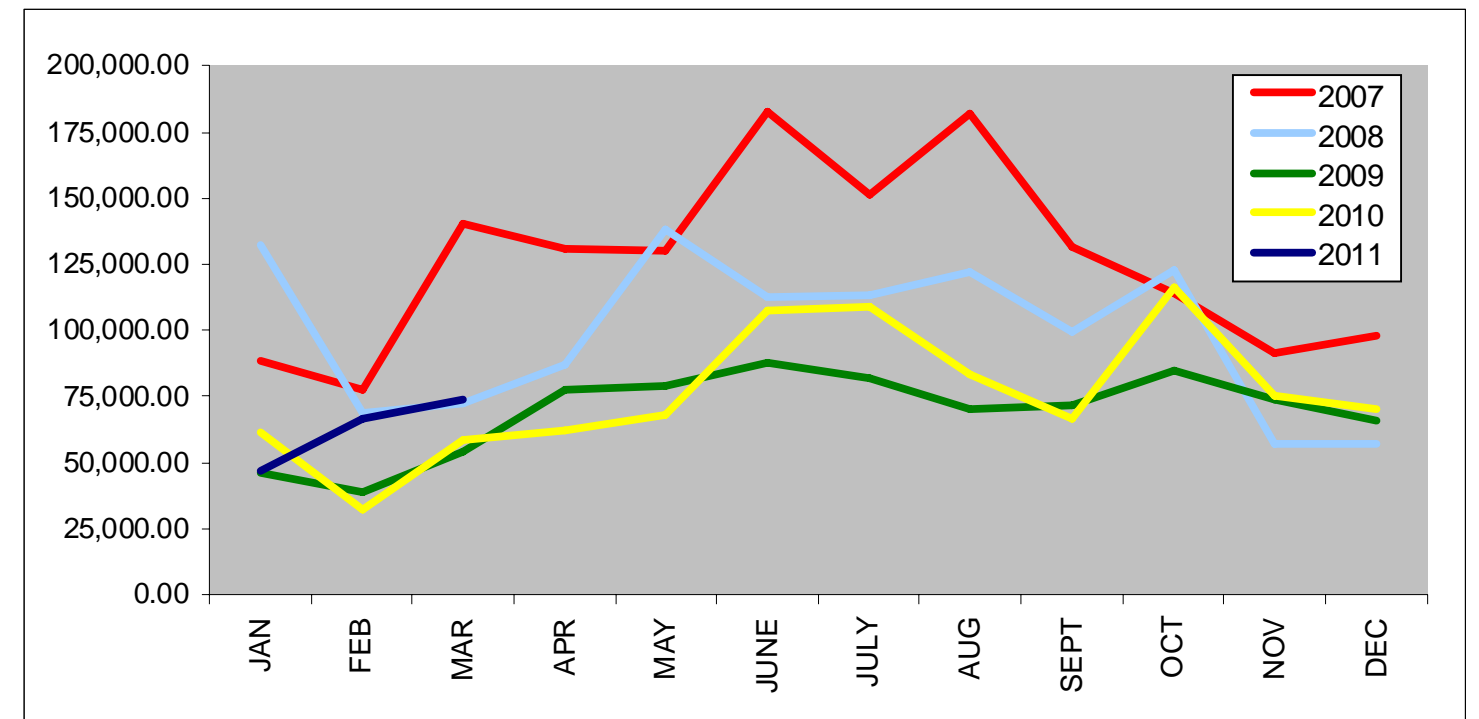
As always we will continue to monitor Geauga's economy and its impact on County Government. Should you have any questions or concerns please do not hesitate to contact me at extension 1600, as we are here to serve.

Financial Responsibility Today... Economic Rewards Tomorrow

REAL ESTATE TRANSFERS 2007 - 2011

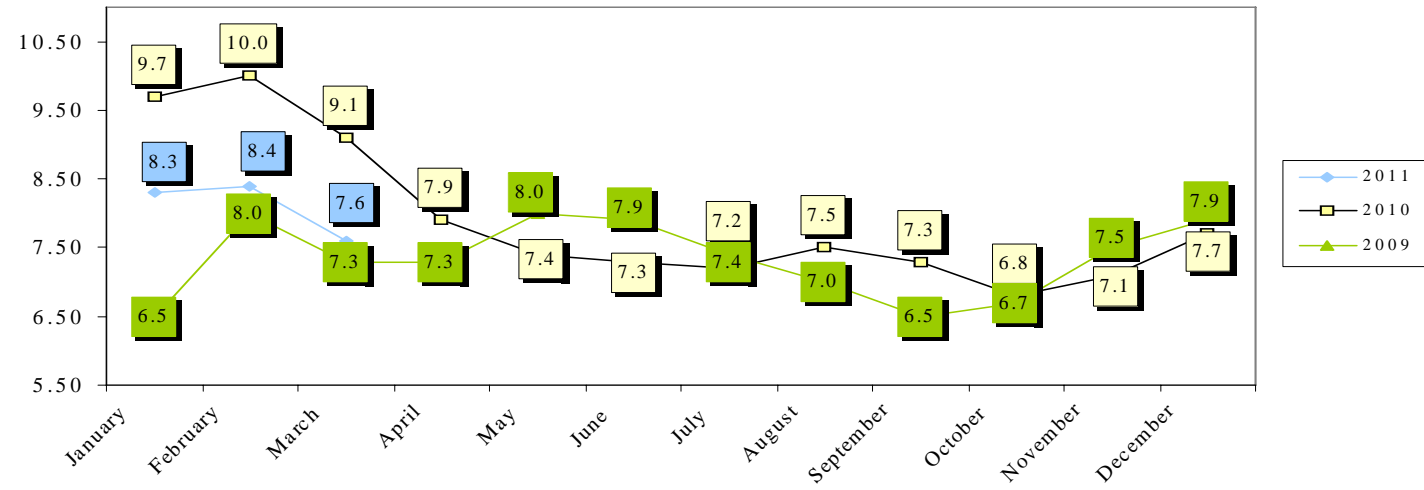
TOTAL CONVEYANCE, TRANSFER, & PERMISSIVE FEES					
	2007	2008	2009	2010	2011
JAN	88,355.10	132,485.70	45,934.60	61,109.00	47,052.40
FEB	77,151.30	68,802.80	38,800.50	32,436.70	66,878.30
MAR	140,313.40	72,247.90	53,891.40	58,350.00	74,155.50
APR	130,953.60	86,685.50	77,718.00	62,364.00	
MAY	130,461.90	137,809.80	79,204.40	68,160.70	
JUNE	182,894.20	112,601.80	87,557.70	107,243.00	
JULY	151,472.30	113,425.20	81,897.20	108,663.30	
AUG	181,657.00	121,866.10	69,851.60	82,980.80	
SEPT	131,635.10	99,703.10	71,990.20	66,564.50	
OCT	114,357.10	123,080.00	84,901.20	116,372.60	
NOV	91,316.60	56,746.20	73,597.40	75,555.30	
DEC	97,868.20	57,121.30	65,795.30	69,869.00	
Y - T - D	1,518,435.80	1,182,575.40	831,139.50	909,668.90	188,086.20
March Comparison Subtotals					
	305,820	273,536	138,627	151,896	188,086
Percentage of Change:					
		-10.556%	-49.321%	9.572%	23.826%

TOTAL PARCELS TRANSFERRED					
March Comparison Subtotals					
	844	717	745	668	761
Percentage of Change:					
		-15.047%	3.905%	-10.336%	13.922%

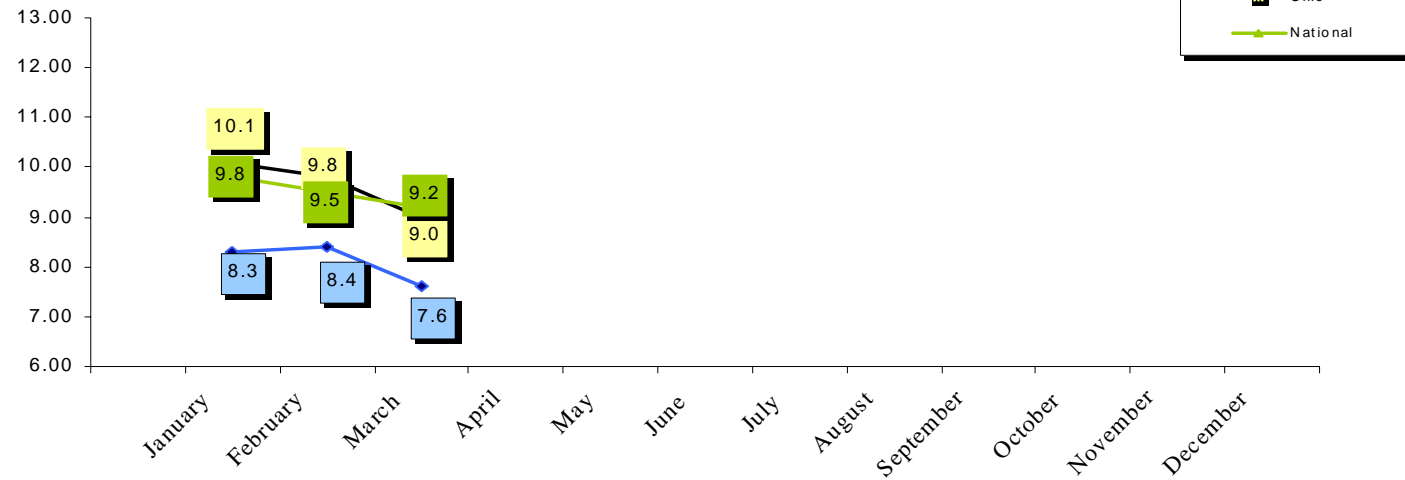


Source: Frank J. Gliha, Geauga County Auditor

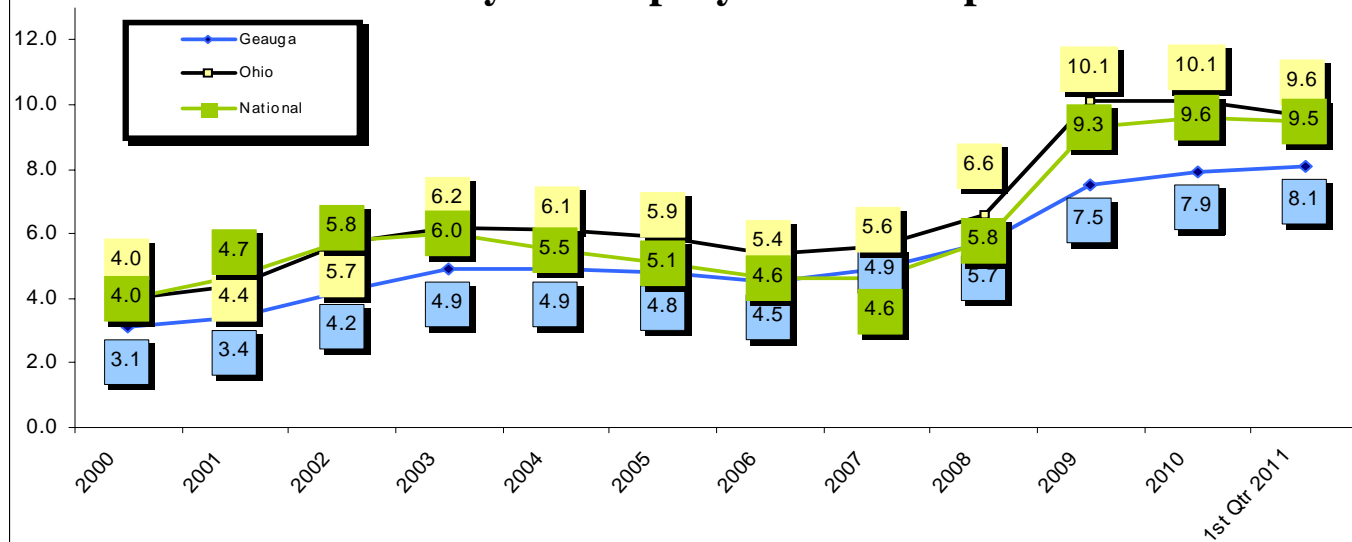
Geauga Unemployment



2011 Unemployment Comparison

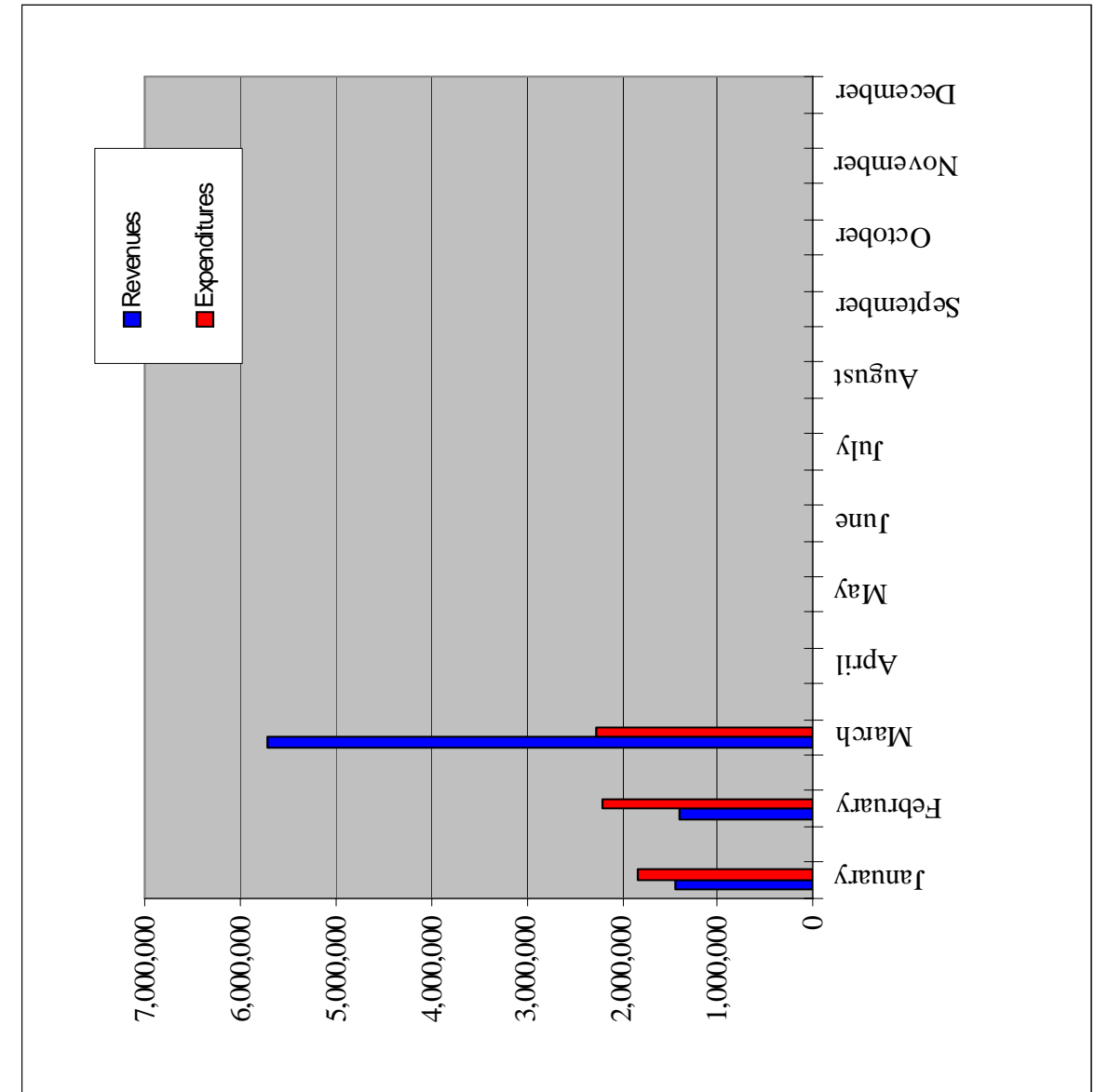


Yearly Unemployment Comparison



Source : Ohio Job & Family Services
Office of Research , Assessment & Accountability

GENERAL FUND ANALYSIS FOR 2011

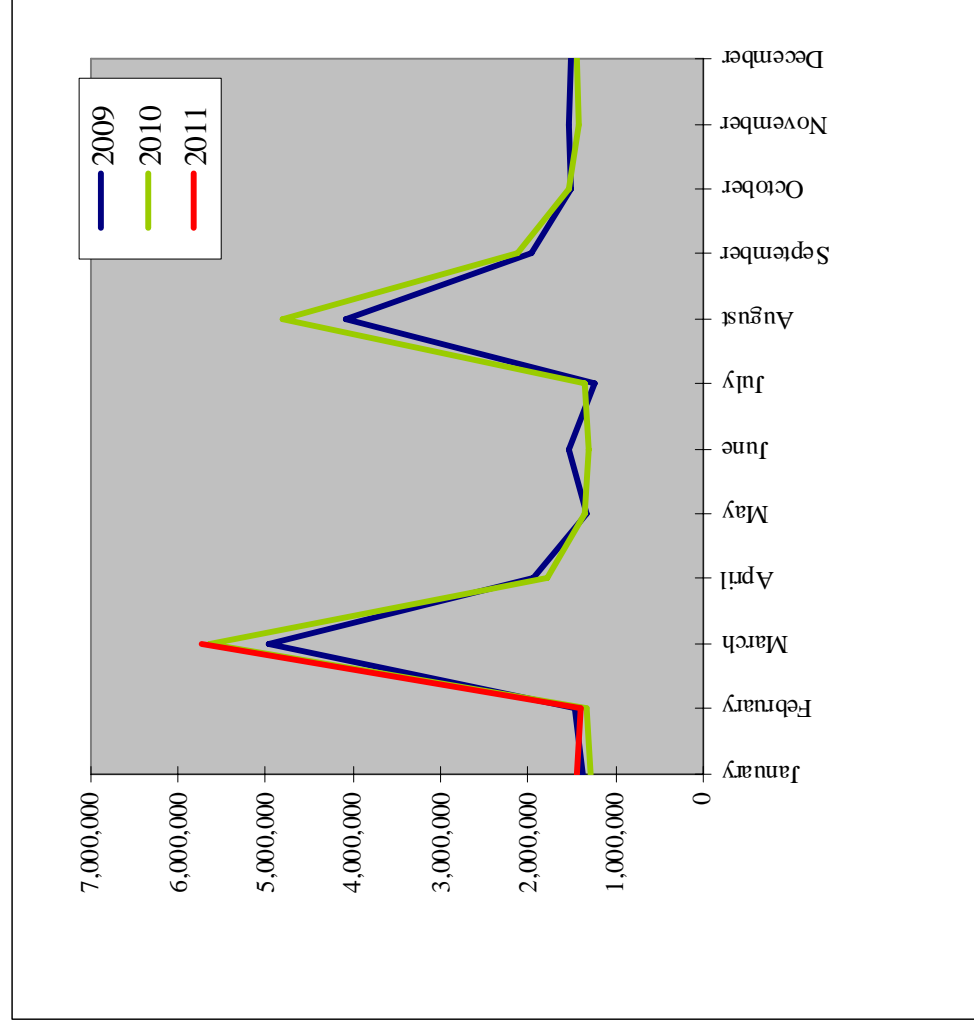


Month	Revenues	Expenditures
January	1,444,018	1,827,888
February	1,400,851	2,212,519
March	5,727,074	2,267,504
April		
May		
June		
July		
August		
September		
October		
November		
December		
Y-T-D	8,571,944	6,307,911
Percent of Revenues In Excess of Expenses		26.412%

Provided By: Frank J. Gliha
Geauga County Auditor

GENERAL FUND REVENUE ANALYSIS
FOR THE LAST THREE YEARS

	2009	2010	2011
January	1,385,054	1,293,228	1,444,018
February	1,477,377	1,328,993	1,400,851
March	4,971,217	5,643,142	5,727,074
April	1,934,092	1,774,909	
May	1,319,572	1,352,980	
June	1,538,302	1,301,797	
July	1,250,963	1,344,408	
August	4,077,443	4,805,243	
September	1,972,516	2,130,446	
October	1,511,468	1,524,001	
November	1,525,348	1,430,448	
December	1,511,359	1,439,100	



Y-T-D	24,474,709	25,368,695	8,571,944
March Comparison			
Subtotals	7,833,647	8,265,364	8,571,944
Percent of Change		5.5111%	3.7092%

Provided By: Frank J. Gliha
Geauga County Auditor

Departmental Expense Analysis

Department	Acct #	2009			2010			2011		
		Appropriations	Expenditures	% Expended	Appropriations	Expenditures	% Expended	Appropriations	Expenditures	% Expended
HUD Housing	T94	45,500.00	6,971.37	15.32%	52,848.43	28,048.65	53.07%	28,755.00	1,110.00	3.86%
HUD - CDBG	T95	2,500.00	0.00	0.00%	2,631.20	2,444.46	92.90%	2,600.00	0.00	0.00%
COPS MORE	TAA	150.30	150.30	100.00%	0.00	0.00	0.00%	0.00	0.00	0.00%
Victim Advocate	TAB	12,446.52	12,446.52	100.00%	0.00	0.00	0.00%	0.00	0.00	0.00%
Juvenile Block Grant	TAD	0.00	0.00	0.00%	0.00	0.00	0.00%	0.00	0.00	0.00%
Sheriff K-9	TAF	26,107.50	9,367.69	35.88%	25,784.93	7,168.39	27.80%	12,443.82	2,093.23	16.82%
Court Security	TAG	0.00	0.00	0.00%	0.00	0.00	0.00%	0.00	0.00	0.00%
Volunteer Guardian Program	TAJ	15,000.00	15,000.00	100.00%	15,311.43	15,000.00	97.97%	15,750.00	3,750.00	23.81%
Recycle Ohio	TAK	0.00	0.00	0.00%	0.00	0.00	0.00%	0.00	0.00	0.00%
Farmland Preservation	TAM	10,000.00	0.00	0.00%	10,000.00	0.00	0.00%	76,884.00	0.00	0.00%
Clean Water Act	TAN	0.00	0.00	0.00%	0.00	0.00	0.00%	0.00	0.00	0.00%
Bicentennial	TAP	806.01	0.00	0.00%	500.00	0.00	0.00%	500.00	0.00	0.00%
LEBG	TAR	0.00	0.00	0.00%	0.00	0.00	0.00%	0.00	0.00	0.00%
Escrow Interest	TAS	0.00	0.00	0.00%	0.00	0.00	0.00%	0.00	0.00	0.00%
Education Pass Thru	TAT	0.00	0.00	0.00%	0.00	0.00	0.00%	0.00	0.00	0.00%
EPA - Land Acquisition	TAX	0.00	0.00	0.00%	0.00	0.00	0.00%	0.00	0.00	0.00%
CASA Fund	TT2	137,724.77	124,949.36	90.72%	132,736.06	117,165.64	88.27%	127,783.00	27,216.03	21.30%
IAP	TT5	33,062.46	27,908.10	84.41%	42,848.29	34,410.26	80.31%	56,753.76	3,440.00	6.06%
Prison Diversion / ISP	TT6	0.00	0.00	0.00%	0.00	0.00	0.00%	0.00	0.00	0.00%
Violence Against Women	TT7	82,861.70	46,494.04	56.11%	71,739.96	67,916.05	94.67%	70,476.85	19,732.84	28.00%
Commissary	TT8	68,236.46	36,651.07	53.71%	69,538.87	31,330.57	45.05%	57,473.19	13,064.54	22.73%
Victims of Crime	TT9	62,859.52	49,820.96	79.26%	63,123.72	42,312.99	67.03%	50,807.22	10,407.48	20.48%
Cops East	TTA	0.00	0.00	0.00%	0.00	0.00	0.00%	0.00	0.00	0.00%
Pretrial Release	TTB	22,391.45	21,916.75	97.88%	20,636.00	20,030.32	97.06%	20,493.00	4,590.72	22.40%
MRDD Donation	TTC	46,000.00	11,391.62	24.76%	0.00	0.00	0.00%	0.00	0.00	0.00%
County Cop Education	TTF	667.13	667.13	100.00%	0.00	0.00	0.00%	0.00	0.00	0.00%
Comm Dev Block Grant	TTI	208,550.57	175,612.57	84.21%	384,116.13	242,700.18	63.18%	577,290.16	30,876.13	5.35%
Victim/Witness	TTJ	69,405.32	61,762.50	88.99%	70,624.42	62,860.58	89.01%	69,596.00	12,843.90	18.45%
Emergency Planning	TTK	52,000.00	33,603.91	64.62%	23,500.00	15,476.72	65.86%	138,074.42	3,980.86	2.88%
Criminal Investigation	TTL	74,765.85	74,765.85	100.00%	59,913.95	59,869.93	99.93%	79,970.00	17,217.22	21.53%
MRDD Residential Services	TTM	2,312,846.10	2,179,795.87	94.25%	2,968,596.64	2,056,523.28	69.28%	2,563,241.13	158,204.02	6.17%
Family First Council	TTN	1,803,496.27	1,577,667.36	87.48%	1,571,506.61	1,352,115.08	86.05%	1,463,643.02	285,501.45	19.51%
US Marshall	TTP	16,339.88	15,060.05	92.17%	0.00	0.00	0.00%	0.00	0.00	0.00%
Drug Prosecution	TTT	55.63	53.63	100.00%	0.00	0.00	0.00%	0.00	0.00	0.00%
DARE Grant	TTW	98,597.49	81,652.44	82.81%	91,420.00	86,316.86	94.42%	72,187.73	15,261.48	21.14%
Help America Vote	TTX	0.00	0.00	0.00%	4,695.98	4,695.98	100.00%	0.00	0.00	0.00%
BOE Reount	TTY	0.00	0.00	0.00%	0.00	0.00	0.00%	0.00	0.00	0.00%
Intensive Supervision	TTZ	55,653.04	50,499.22	90.74%	48,730.81	45,821.36	94.03%	48,233.42	11,065.33	22.94%
Unclaimed Money	U01	100,000.00	40,871.33	40.87%	100,000.00	78,314.49	78.31%	100,000.00	1,913.01	1.91%
Liability Insurance	U05	7,000.00	4,250.00	60.71%	9,577.28	7,077.28	73.90%	15,000.00	0.00	0.00%
Emergency Management	W	498,872.78	405,965.33	81.38%	477,838.30	337,634.17	70.66%	497,702.10	98,468.82	19.78%
Workforce Investment	WIA	0.00	0.00	0.00%	0.00	0.00	0.00%	0.00	0.00	0.00%
Domestic Violence	WW	17,400.00	15,993.70	91.92%	16,500.00	16,106.00	97.61%	16,318.00	16,318.00	100.00%
Sheriff Rotary	X05	623,286.10	532,800.96	85.48%	491,823.49	442,279.41	89.93%	586,683.62	103,484.40	17.64%
Fair Police Rotary	X10	39,511.20	38,494.09	97.43%	43,284.00	40,985.83	94.69%	39,758.50	0.00	0.00%
Central Vehicle Maintenance	X20	3,049.51	49.51	1.62%	3,000.00	401.48	13.38%	1,043.50	118.50	11.36%
Sheriff Rotary	X25	0.00	0.00	0.00%	0.00	0.00	0.00%	0.00	0.00	0.00%
Youth Center	YC	7,313.68	3,645.68	49.85%	0.00	0.00	0.00%	0.00	0.00	0.00%
Total Other Funds		124,390,064.97	101,480,631.30	81.58%	117,046,547.07	95,557,490.98	81.64%	99,790,045.38	21,165,691.72	21.21%
Total Expense - All Funds		154,173,374.23	127,225,879.36	82.52%	145,141,898.62	120,753,029.62	83.20%	127,642,039.29	27,473,602.72	21.52%

Departmental Expense Analysis

Department	Acct #	2009			2010			2011		
		Appropriations	Expenditures	% Expended	Appropriations	Expenditures	% Expended	Appropriations	Expenditures	% Expended
General Bond Retirement	O1G	2,511,747.39	1,376,747.39	54.81%	626,748.00	591,747.39	94.42%	126,748.00	0.00	0.00%
G.O. Retirement Fund	O1N	4,583,410.00	4,583,318.68	100.00%	2,806,000.00	2,800,631.10	99.81%	2,778,000.00	194,350.83	7.00%
Park Debt	O1P	0.00	0.00	0.00%	0.00	0.00	0.00%	0.00	0.00	0.00%
Special Assess Bond Fund	O2S	448,278.00	416,531.22	92.92%	444,983.00	413,235.82	92.87%	445,726.00	0.00	0.00%
Mortgage Revenue Bond	O3M	13,450.00	13,450.00	100.00%	14,100.00	14,100.00	100.00%	13,700.00	0.00	0.00%
Parkman Revenue	O4M	0.00	0.00	0.00%	175,000.00	172,636.99	98.65%	0.00	0.00	0.00%
OWDA	O5M	4,898,993.48	4,868,904.52	99.39%	1,130,000.00	1,125,913.44	99.64%	1,375,000.00	0.00	0.00%
Ohio Housing Trust	OHT	0.00	390,223.00	0.00%	0.00	384,939.00	0.00%	0.00	124,832.50	0.00%
Water Resources	P	6,174,577.19	5,643,244.60	91.39%	6,237,110.65	5,644,387.84	90.50%	5,276,596.67	1,010,015.57	19.14%
Public Defender Fees	PDF	0.00	4,006.05	0.00%	0.00	2,728.50	0.00%	0.00	455.48	0.00%
Probate Sp Projects	PSP	0.00	0.00	0.00%	0.00	0.00	0.00%	0.00	0.00	0.00%
Water District	PW	798,001.01	623,513.48	78.13%	969,322.59	831,400.35	85.77%	782,588.52	152,241.63	19.45%
Airport Construction	Q01	321,363.69	293,936.81	91.47%	40,439.00	13,745.00	33.99%	512,915.00	485,263.98	94.61%
Burton Heights Road Const	Q02	0.00	0.00	0.00%	0.00	0.00	0.00%	0.00	0.00	0.00%
EMA Garage Construction	Q04	0.00	0.00	0.00%	0.00	0.00	0.00%	0.00	0.00	0.00%
Human Services Const.	Q07	0.00	0.00	0.00%	0.00	0.00	0.00%	0.00	0.00	0.00%
Jail Construction	Q08	59,000.00	16,942.00	28.72%	30,000.00	23,176.00	77.25%	0.00	0.00	0.00%
Co Engineer Building Fund	Q09	0.00	0.00	0.00%	0.00	0.00	0.00%	0.00	0.00	0.00%
Aging Construction	Q13	232,447.00	13,707.00	0.00%	0.00	0.00	0.00%	0.00	0.00	0.00%
Mental Health Construction	Q14	0.00	0.00	0.00%	988,693.00	30,538.83	3.09%	1,029,500.00	38,437.50	3.73%
County Sewer Improvements	Q23	1,820,929.44	893,921.96	49.09%	2,263,918.07	1,607,630.36	71.01%	1,079,093.29	156,588.73	14.51%
Parkman Sewer	Q27	445,641.00	362,565.80	81.36%	13,766.96	0.00	0.00%	13,766.96	0.00	0.00%
Valley View Sewer	Q28	1,308.29	1,308.29	100.00%	0.00	0.00	0.00%	0.00	0.00	0.00%
CF Park Water	Q32	0.00	0.00	0.00%	0.00	0.00	0.00%	0.00	0.00	0.00%
Bainbridge Water	Q34	13,000.00	13,000.00	100.00%	0.00	0.00	0.00%	0.00	0.00	0.00%
Hunting Valley Construction	Q35	20,293.59	20,293.59	100.00%	0.00	0.00	0.00%	0.00	0.00	0.00%
Geauga/Trumbull Construction	Q39	1,476.49	1,476.49	100.00%	0.00	0.00	0.00%	0.00	0.00	0.00%
Metzenbaum Construction	Q40	1,907,153.75	349,547.63	18.33%	3,810,886.09	1,521,535.20	39.93%	2,433,113.69	1,329,944.15	54.66%
Park Bd Improvements	Q41	5,907,944.06	2,666,280.17	45.13%	7,239,029.00	4,855,595.18	67.08%	3,306,195.74	596,004.48	18.03%
County Water	Q44	0.00	0.00	0.00%	0.00	0.00	0.00%	0.00	0.00	0.00%
McFarland Sewer	Q45	35,000.00	0.00	0.00%	35,000.00	0.00	0.00%	0.00	0.00	0.00%
Park Board Retainage Payout	Q46	0.00	0.00	0.00%	0.00	0.00	0.00%	0.00	0.00	0.00%
Courthouse Construction	Q47	0.00	0.00	0.00%	15,000.00	0.00	0.00%	0.00	0.00	0.00%
Thompson WWTP	Q48	0.00	0.00	0.00%	275,000.00	52,150.96	0.00%	208,603.84	16,375.40	7.85%
Ditches	R's	12,997.49	2,000.00	15.39%	11,549.75	0.00	0.00%	12,062.29	0.00	0.00%
General Juvenile	S02	595,639.79	439,958.36	73.86%	779,820.97	649,327.92	83.27%	453,611.91	178,959.68	39.45%
Metzenbaum	S03	19,045,362.40	17,200,209.40	90.31%	19,378,865.20	17,609,470.90	90.87%	17,966,504.36	4,568,909.70	25.43%
Medicaid Risk	S04	0.00	0.00	0.00%	0.00	0.00	0.00%	0.00	0.00	0.00%
Park Board	S05	8,884,728.47	7,636,285.52	85.95%	7,921,660.68	6,797,794.56	85.81%	7,586,194.93	1,706,652.17	22.50%
Children's Services	SS	4,362,318.55	3,293,660.79	75.50%	3,925,825.42	2,892,359.11	73.68%	3,221,661.70	679,117.19	21.08%
Sick & Vacation	SV	50,000.00	0.00	0.00%	0.00	0.00	0.00%	0.00	0.00	0.00%
Storm Water	SW	32,912.00	12,912.26	39.23%	32,317.40	13,691.68	42.37%	33,855.40	2,531.40	7.48%
Revolving Loan	T02	1,174,552.00	668,899.00	56.95%	1,359,660.26	784,617.24	57.71%	603,519.89	42,472.79	7.04%
Infrastructure Loans	T03	14,300.00	2,526.00	17.66%	125,299.37	2,462.50	1.97%	222,000.00	0.00	0.00%
LCL Revolving Loans	T04	153,000.00	28,963.91	18.93%	123,000.00	83,098.34	67.56%	123,000.00	8,785.16	7.14%
Transportation Capital Fund	T82	203,811.00	203,811.00	100.00%	714,318.86	208,797.10	29.23%	703,719.09	315,267.75	44.80%
Aging	T88	2,743,347.62	2,522,926.45	91.97%	2,850,836.80	2,655,896.24	93.16%	3,201,084.29	600,930.81	18.77%
Transportation	T89	1,405,193.65	1,261,632.00	89.78%	1,422,680.24	1,270,942.69	89.33%	1,397,125.21	332,981.36	23.83%
Community Development	T93	294,259.89	278,999.79	94.81%	270,651.13	257,373.92	95.09%	252,059.04	58,520.12	23.22%

**GENERAL FUND
Analysis of 2011 Monthly Revenues**

	January	February	March	April	May	June	July	August	Sept.	Oct.	Nov	Dec	2011 Totals	2010 Totals	Percent Of Change
Property Taxes	48,875	62,880	3,638,928										3,750,682	3,676,578	2.02%
Sales Taxes	821,859	943,798	1,062,149										2,827,806	2,742,905	3.10%
Charges for Services	97,322	177,904	690,408										965,633	823,948	17.20%
Licenses and Permits	410	444	500										1,354	1,709	-20.75%
Fines and Forfeitures	15,178	23,425	9,480										48,082	28,035	71.50%
Intergovernmental	102,705	118,749	94,528										315,982	290,158	8.90%
Interest Income	245,908	26,071	95,034										367,008	420,680	-12.76%
Other Revenue	106,226	4,221	130,688										279,134	259,639	7.51%
Transfers	5,542	5,361	5,361										16,263	21,711	-25.09%
Totals	1,444,018	1,400,851	5,727,074										8,571,944	8,265,364	3.71%

GENERAL FUND EXPENDITURES ANALYSIS
FOR THE LAST THREE YEARS

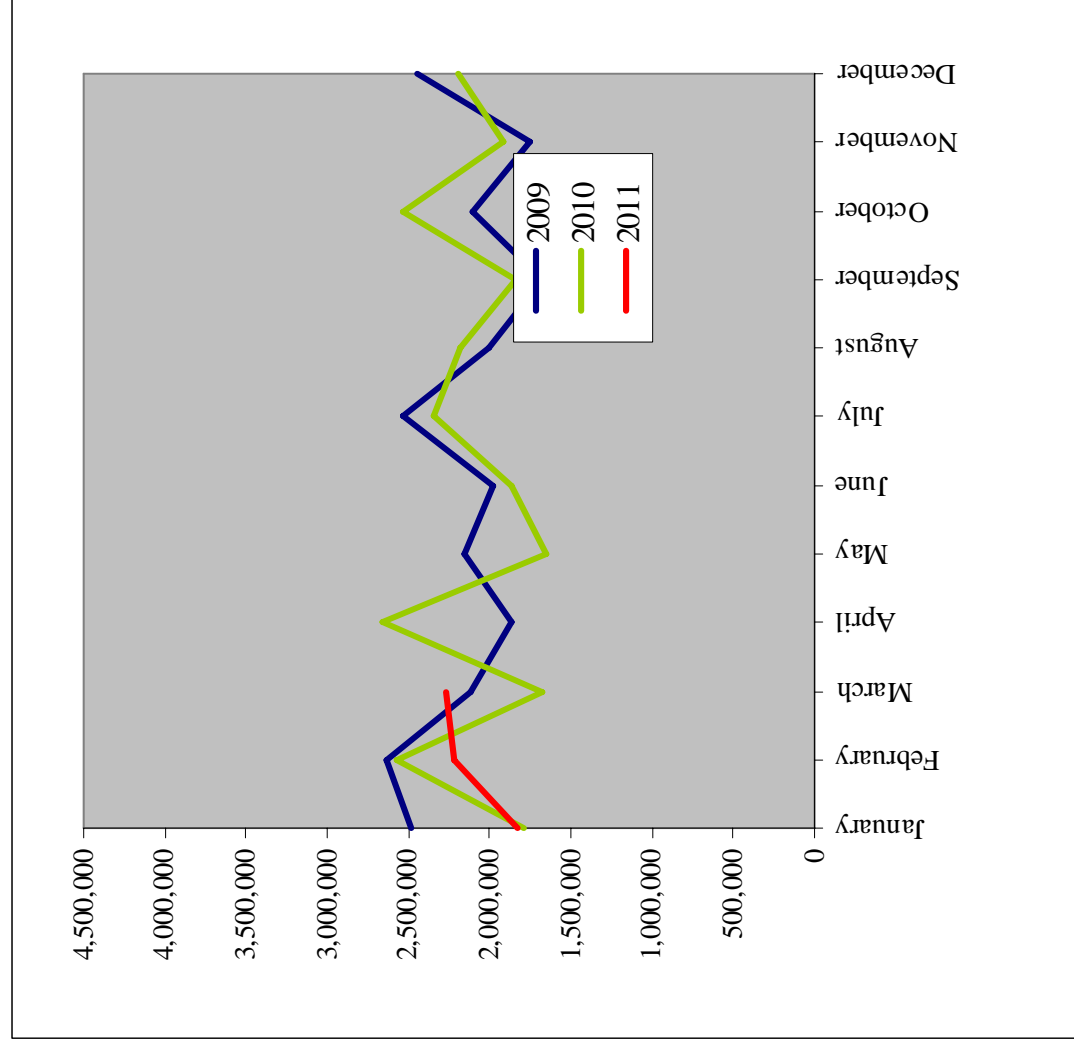
	2009	2010	2011
January	2,489,326	1,788,421	1,827,888
February	2,637,476	2,569,932	2,212,519
March	2,112,049	1,678,286	2,267,504
April	1,871,466	2,661,221	
May	2,154,563	1,651,219	
June	1,972,227	1,863,998	
July	2,532,643	2,338,056	
August	2,001,021	2,183,898	
September	1,668,702	1,833,178	
October	2,100,529	2,529,478	
November	1,756,578	1,909,323	
December	2,448,667	2,188,531	
Y-T-D	25,745,248	25,195,539	6,307,911

March Comparison

Subtotals 7,238,851 6,036,639 6,307,911

Percent of Change - 16.6078% 4.4938%

Provided By: Frank J. Gliha
Geauga County Auditor



Departmental Expense Analysis

Department	Acct #	2009		2010		2011	
		Appropriations	Expenditures	Appropriations	Expenditures	Appropriations	Expenditures
Other Funds:							
Mental Health	AA	9,955,062.85	8,869,798.09	8,063,053.05	8,360,476.07	8,360,476.07	2,207,454.94
Education & Enforcement	AEE	18,319.76	2,722.47	18,625.23	82.17%	14,591.95	9,651.15
Dog Warden	B	297,547.12	256,541.06	247,848.93	85.99%	237,812.05	65,273.37
Ohio Elections Commission	BEC	0.00	2,485.00	390.00	0.00%	0.00	170.00
Hotel/Motel	BED	57,841.90	56,910.67	53,465.88	94.63%	45,000.00	13,080.57
Building Standards Assess	BSA	3,900.00	3,724.88	3,091.64	90.38%	4,100.00	673.87
Drug Law Enforcement	C	0.00	0.00	0.00	0.00%	0.00	0.00
Care & Custody	CCF	443,803.47	395,690.29	285,767.58	78.24%	282,586.99	73,911.80
Courthouse Donation	CD	0.00	0.00	19,045.00	100.00%	45,000.00	0.00
County Home	CH	746,451.45	683,156.34	592,515.83	92.78%	604,237.49	138,355.62
Concealed Handgun	CHL	82,218.70	72,948.15	76,533.43	84.53%	79,660.57	16,166.66
Clerk of Courts	CLC	3,500.00	3,500.00	7,300.00	42.20%	10,000.00	0.00
Common Pleas Comput.	CPC	6,500.00	1,500.00	11,000.00	73.33%	10,000.00	0.00
Mediation	CPM	45,410.00	12,595.08	24,224.30	53.83%	72,705.00	13,721.74
City Recorder Micrographics	CRM	126,937.06	59,400.39	48,628.16	41.20%	118,420.00	18,590.16
Certificate of Title	CTA	349,511.56	321,205.68	310,492.74	91.55%	334,342.98	78,242.44
Court Technology	CTF	480,456.52	345,937.79	288,342.25	75.94%	355,929.68	60,653.69
Road and Bridge Fund	D	4,201,722.83	2,059,206.39	4,775,378.68	84.21%	4,352,476.52	0.00
Delinquent Tax	DT	175,142.35	164,298.70	176,067.59	81.69%	221,861.46	54,207.59
Health Department	all funds	2,758,981.72	2,292,119.32	2,496,809.94	83.84%	2,702,884.10	428,287.27
Escrow	ERB	36,046.43	36,046.43	0.00	0.00%	0.00	0.00
GAPP Fund	GAP	1,025.00	716.94	0.00	0.00%	0.00	0.00
Geauga/Trum Solid Waste	GT	2,775,051.10	1,874,751.91	1,318,122.20	73.67%	2,090,251.35	269,613.26
Human Services	H	7,262,508.09	6,554,768.73	5,346,061.30	91.20%	5,035,431.15	1,106,559.54
Child Support Enforc. Admin.	HC	1,193,849.39	1,072,936.22	1,052,543.92	87.30%	1,074,127.84	256,584.68
911 Program	HLP	836,047.33	803,286.15	781,841.96	95.81%	817,103.96	155,592.40
Indigent Guardianship	IG	13,350.00	7,786.00	10,822.00	90.45%	9,928.00	3,775.00
Real Estate Assessment	J	2,050,574.43	1,461,685.72	1,581,520.40	68.44%	1,629,030.91	404,475.26
Juvenile Probate Comput.	JCC	22,500.00	3,500.00	7,300.00	30.04%	16,000.00	0.00
Juvenile I & A	JIA	0.00	0.00	0.00	0.00%	200.00	0.00
Juvenile Indigent Drivers	JID	250.00	0.00	0.00	0.00%	700.00	0.00
Juvenile/Prob Comput.	JPC	10,000.00	1,500.00	0.00	0.00%	7,200.00	0.00
Juvenile Recovery	JRF	17,691.12	10,868.69	12,477.55	64.40%	13,587.00	3,445.24
Juvenile Ct. Sp Projects	JSP	0.00	0.00	0.00	0.00%	8,000.00	0.00
Co Engineer	K	6,799,448.77	6,195,635.26	6,395,136.52	88.19%	6,936,083.86	1,735,829.46
Soil and Water Fund	L	455,595.00	441,851.55	373,638.47	81.24%	411,743.84	85,817.16
Law Library	LAW	0.00	0.00	257,489.46	74.32%	281,004.49	118,545.79
LEA Training	LEA	6,405.00	3,398.50	3,682.00	34.45%	8,050.00	2,089.67
800 Communications	MHZ	910,293.89	815,958.82	805,878.85	91.60%	229,288.47	65,255.65
Municipal Road Tax	MRT	318,861.87	117,601.67	0.00	0.00%	340,135.70	0.00
County Home Innov.	N1	4,500.00	3,450.24	1,980.00	94.29%	0.00	0.00
Computer Equip. Improv.	N3	283,488.02	167,181.81	90,483.77	53.13%	110,919.60	0.00
Building Improv. Fund	N5	730,098.14	613,837.54	109,408.01	78.24%	103,641.20	3,641.00
Youth Center Improv.	N11	0.00	0.00	0.00	0.00%	0.00	0.00
800 Comm. - Perm. Improv.	N12	5,108,639.35	3,818,558.60	1,206,394.60	60.67%	859,125.89	335,730.40
Newbury HUD	NHD	0.00	0.00	111,807.12	0.00%	0.00	0.00
NSP	NSP	69,642.27	69,636.27	65,392.50	100.00%	0.00	0.00

Departmental Expense Analysis

Department	Acct #	2009			2010			2011		
		Appropriations		%	Appropriations		%	Appropriations		%
		Expenditures	Expend	Expenditures	Expend	Expenditures	Expend	Expenditures	Expend	
General Fund:										
Commissioner	A01	841,207.43	784,702.32	93.28%	735,668.87	674,511.98	91.69%	679,417.08	134,594.02	19.81%
Microfilm Board	A01	276,410.83	251,581.61	91.02%	236,835.11	215,609.25	91.04%	222,807.98	55,468.28	24.90%
Auditor	A01	742,510.31	694,440.72	93.53%	726,472.12	651,209.47	89.64%	731,573.79	159,486.96	21.80%
Treasurer	A01	329,342.31	308,995.31	93.82%	341,161.14	318,971.84	93.50%	323,630.85	66,420.27	20.52%
Other Finance Admin.	A01	254,939.23	217,216.07	85.20%	246,426.92	227,383.33	92.27%	215,617.65	71,416.43	33.12%
Bank Charges	A01	40,400.00	33,440.00	82.77%	36,280.00	33,580.00	92.56%	32,500.00	5,000.00	15.38%
Prosecutor	A01	1,282,244.04	1,180,291.95	92.05%	1,267,945.96	1,157,589.01	91.30%	1,254,648.94	328,907.35	26.22%
Budget Commission	A01	300.00	135.98	45.33%	300.00	0.00	0.00%	300.00	0.00	0.00%
Bureau of Inspection	A01	80,000.00	70,805.13	88.51%	86,500.00	86,171.32	99.62%	86,500.00	0.00	0.00%
Planning	A01	276,901.45	264,992.10	95.70%	190,318.03	181,241.17	95.23%	181,237.01	36,263.61	20.01%
ADP Board	A01	948,769.39	866,066.68	91.28%	914,030.50	832,149.69	91.04%	955,467.01	409,703.33	42.88%
Court of Appeals	A02	61,148.15	48,944.90	80.04%	73,748.15	55,862.08	75.75%	73,248.15	43,261.82	59.06%
Jury Commission	A02	8,818.07	6,927.65	78.56%	9,900.91	7,281.60	73.54%	9,991.00	1,211.47	12.13%
Adult Probation Dept.	A02	103,206.79	102,661.20	99.47%	102,562.63	101,550.41	99.01%	106,447.32	24,052.02	22.60%
Juvenile Court	A02	587,740.20	507,993.41	86.43%	568,752.24	483,931.14	85.09%	560,804.78	119,026.21	21.22%
Juvenile Probation Dept.	A02	310,126.10	300,781.57	96.99%	299,452.74	292,117.90	97.55%	303,925.21	68,899.76	22.67%
Detention Home	A02	439,000.00	437,688.00	99.69%	395,280.18	395,280.00	100.00%	325,000.00	80,528.00	24.78%
Probation Court	A02	234,875.02	202,846.49	86.36%	222,896.39	211,854.72	95.05%	231,577.34	51,133.31	22.08%
Clerk of Courts	A02	539,683.62	516,304.11	95.67%	534,910.85	510,117.86	95.37%	529,717.60	128,755.93	24.31%
Coroner	A02	145,980.47	126,562.91	86.70%	140,999.00	124,975.97	88.64%	147,722.00	21,012.16	14.22%
Lab & Morgue	A02	274,749.48	253,177.36	92.15%	267,961.84	252,994.30	94.41%	106,234.57	46,442.61	43.72%
Municipal Court	A02	171,906.79	167,508.68	97.44%	171,435.66	168,683.11	98.39%	176,103.19	35,070.31	19.91%
Board of Elections	A03	884,362.74	729,565.42	82.50%	907,586.28	827,482.33	91.17%	916,579.71	133,771.09	14.59%
Building & Grounds Maint	A04	2,620,544.70	1,845,271.56	70.42%	2,445,007.35	1,893,450.46	77.44%	2,479,278.09	520,740.00	21.00%
Airport	A05	0.00	0.00	0.00%	0.00	0.00	0.00%	0.00	0.00	0.00%
Sheriff	A06	9,838,895.81	9,376,727.89	95.30%	9,212,135.11	8,883,965.85	96.44%	8,932,269.96	2,114,784.37	23.68%
Recorder	A06	260,624.92	234,994.66	90.17%	256,068.45	234,213.16	91.47%	260,623.92	60,843.93	23.35%
Building	A06	478,336.95	452,253.87	94.55%	369,054.18	354,953.49	96.18%	305,258.90	76,051.56	24.91%
Emergency Mgt Grants	A06	9,998.45	9,998.45	100.00%	9,998.45	9,998.45	100.00%	9,998.45	0.00	0.00%
Public Defender	A06	309,400.35	299,192.72	96.70%	299,874.69	293,802.70	97.98%	302,040.59	67,378.30	22.31%
Other Agriculture Programs	A06/A07	543,706.07	541,396.80	99.58%	519,009.68	518,322.92	99.87%	518,327.04	185,011.38	35.69%
Other Health Programs	A08	318,949.02	62,396.28	19.56%	320,641.75	104,409.28	32.56%	328,700.58	197,500.96	60.09%
Veteran's	A09	477,152.25	360,371.13	75.53%	491,479.29	361,084.93	73.47%	466,151.20	83,287.11	17.87%
Public Assistance Grants	A09	101,000.00	100,055.00	99.06%	99,229.00	93,996.00	94.73%	99,229.00	0.00	0.00%
Sewer Transfers	A10	30,000.00	6,229.87	20.77%	30,000.00	5,061.36	16.87%	20,000.00	321.00	1.61%
County Engineer	A12	198,916.98	183,718.14	92.36%	164,798.42	162,728.59	98.74%	154,939.72	32,875.84	21.22%
Law Libraries	A13	58,149.98	58,090.39	99.90%	0.00	0.00	0.00%	0.00	0.00	0.00%
Commissioners - Misc.	A14/A15/A17	4,862,664.89	3,356,247.63	69.02%	4,561,008.78	3,698,195.06	81.08%	4,976,665.04	767,111.93	15.41%
Common Pleas	A21	840,346.47	784,724.10	93.38%	839,620.88	770,807.91	91.80%	827,460.24	181,579.68	21.94%
Total General Fund		29,783,309.26	25,745,248.06	86.44%	28,095,351.55	25,195,538.64	89.68%	27,851,993.91	6,307,911.00	22.65%

GENERAL FUND 2011 Analysis of Monthly Expenditures

	January	February	March	April	May	June	July	August	Sept.	Oct.	Nov.	December	2011 Totals	2010 Totals	Percent Of Change
	Commissioners	45,345	44,166	45,083										134,594	156,685
Microfilm Board	22,344	17,635	15,489										55,468	55,184	0.52%
Auditor	55,696	52,154	51,638										159,487	150,184	6.19%
Treasurer	20,330	24,344	21,747										66,420	69,608	-4.58%
Postage	30,959	0	30,210										61,169	63,888	-4.26%
CAFR Expenses	0	0	9,780										9,780	0	100.00%
Card Service Fee	188	40	240										467	964	-51.49%
Bank Fees	0	5,000	0										5,000	6,080	-17.76%
Prosecutor	145,472	96,390	87,046										328,907	306,056	7.47%
Budget Comm.	0	0	0										0	0	0.00%
Bureau of Insp	0	0	0										0	3,757	-100.00%
Planning Com.	12,725	12,297	11,242										36,264	44,458	-18.43%
ADP Board	71,604	132,885	205,215										409,703	283,131	44.70%
Court of Appeals	0	0	43,262										43,262	55,862	-22.56%
Jury Commission	332	332	548										1,211	1,911	-36.60%
Adult Probation	8,017	8,017	8,017										24,052	23,724	1.38%
Juvenile Court	43,228	42,679	33,120										119,026	124,644	-4.51%
Juvenile Probation	23,110	22,703	23,086										68,900	67,759	1.68%
Detention Home	0	0	80,528										80,528	98,820	-18.51%
Probate Court	18,846	16,208	16,079										51,133	48,854	4.67%
Clerk of Courts	47,349	41,824	39,583										128,756	123,434	4.31%
Coroner	8,187	7,038	5,787										21,012	25,989	-19.15%
Lab and Morgue	23,421	18,137	4,885										46,443	62,277	-25.43%

**GENERAL FUND
2011 Analysis of Monthly Expenditures**

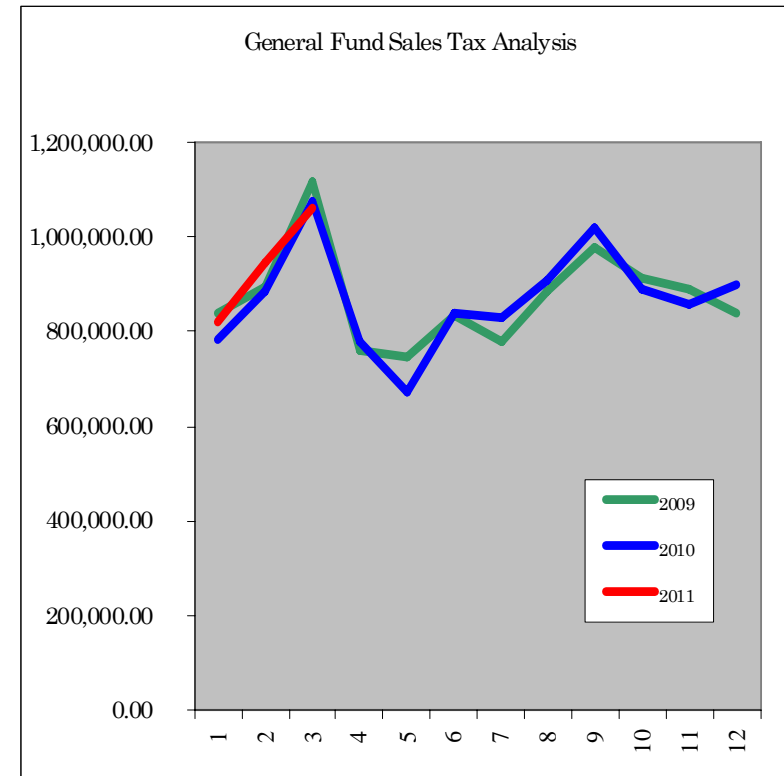
	January	Feb.	March	April	May	June	July	August	Sept.	Oct.	Nov.	Dec.	2011 Totals	2010 Totals	Percent Of Change
Municipal Court	12,705	11,313	11,052										35,070	41,294	-15.07%
Board of Elections	42,374	48,937	42,460										133,771	123,300	8.49%
Maint. & Operations	179,459	158,260	183,021										520,740	495,684	5.05%
Airport	0	0	0										0	0	0.00%
Sheriff	718,776	711,797	684,211										2,114,784	2,205,496	-4.11%
Recorder	21,747	20,561	18,536										60,844	57,714	5.42%
Building Department	35,864	20,049	20,138										76,052	93,538	-18.69%
Emergency Manag.	0	0	0										0	0	0.00%
Public Defender	20,911	22,720	23,747										67,378	68,456	-1.57%
Other Agriculture	0	50	116,645										116,695	116,695	0.00%
Cooperative Ext.	0	0	68,316										68,316	69,816	-2.15%
Other Health Programs	15,042	19,193	163,266										197,501	11,930	1555.55%
Veterans Services	31,135	21,132	31,021										83,287	81,648	2.01%
Public Assistant	0	0	0										0	0	0.00%
Sewer Transfers	0	0	321										321	831	-61.38%
County Engineer	11,007	10,926	10,943										32,876	34,479	-4.65%
Law Library	0	0	0										0	0	0.00%
Other	104,649	566,910	95,554										767,112	686,911	11.68%
Common Pleas	57,068	58,823	65,688										181,580	175,579	3.42%
Grand Total	1,827,888	2,212,519	2,267,504										6,307,911	6,036,639	4.49%

Please Note: The above figures are based on the General Fund actual expenditures.

**Geauga County
Analysis of Sales Tax Revenues
For the Years 2009 through 2011**

	2009	2010	2011		10-2011 Percent of Increase General Fund **	
	General Fund	General Fund	Prior 1/2%	New 1/2%		
January	838,963.94	783,490.56	410,737.20	411,121.33	821,858.53	4.90%
February	894,351.16	885,774.11	471,961.16	471,836.47	943,797.63	6.55%
March	1,115,260.43	1,073,640.68	531,123.90	531,025.45	1,062,149.35	-1.07%
April	762,385.99	777,675.14				
May	747,643.20	674,461.76				
June	835,783.80	838,097.71				
July	778,042.62	831,976.19				
August	884,232.04	906,652.69				
September	976,086.63	1,019,332.44				
October	913,205.61	891,106.15				
November	890,218.05	857,776.06				
December	837,706.13	896,852.82				
Grand Total	10,473,879.60	10,436,836.31	1,413,822.26	1,413,983.25	2,827,805.51	
Comparative Totals Thru March	2,848,575.53	2,742,905.35			2,827,805.51	Overall Change 3.0953%

** % is for total sales tax collected.



	Sales Tax Certified Revenue	Y-T-D Percent Received
2009	10,500,000	99.75%
2010	10,000,000	104.37%
2011	10,000,000	28.28%

Provided By: Frank J. Gliha
Geauga County Auditor